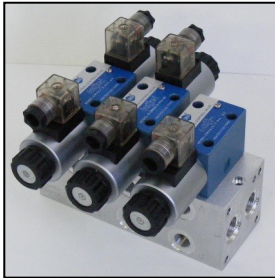
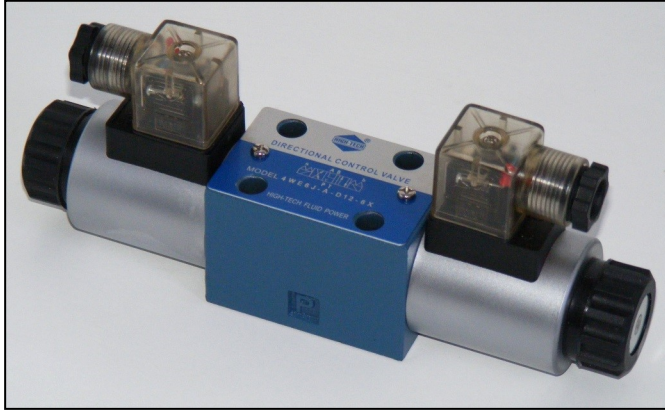




# HIGH-TECH CETOP 3 NG6 SOLENOID VALVES

*The Hyteco range of High-Tech Cetop 3 Solenoid Valves are manufactured to the ISO 9001 International Quality Management system. They offer very good value, as a lower cost alternative to the more expensive brands, and function equally well in a wide range of industry applications.*

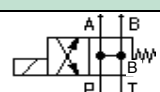
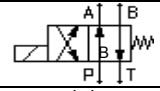
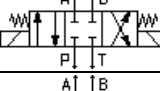
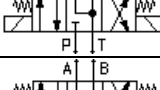
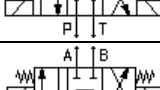
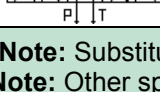


### Features:

- Maximum Pressure rated to 350 Bar
- Maximum Pressure on T-Port 210 Bar
- Maximum Flow up to 80 LPM
- Available in 12 & 24VDC / 110 & 220VAC
- All common spool configurations available

### Benefits:

- Economical option over expensive brands
- Ideal for high pressure applications to 350 Bar
- Able to handle series circuits to 210 bar back pressure

Valve Symbol	Configuration	Part Number	Maximum Pressure In P, A & B	KG	Nominal Flow for Switching @200 Bar Nominal
	2 Position All Ports Open	4WE6HA-A-(voltage*)-6X	350 Bar	1.65	50 LPM
	2 Position Cross Over	4WE6D-A-(voltage*)-6X	350 Bar	1.65	50 LPM
	3 Position All Ports Closed	4WE6E-A-(voltage*)-6X	350 Bar	2.25	50 LPM
	3 Position P Closed, A & B to T	4WE6J-A-(voltage*)-6X	350 Bar	2.25	50 LPM
	3 Position All Ports Open	4WE6H-A-(voltage*)-6X	350 Bar	2.25	50 LPM
	3 Position P to T, A & B Closed	4WE6G-A-(voltage*)-6X	350 Bar	2.25	50 LPM

**\*Note:** Substitute (voltage) with coil voltage required: D12=12VDC, D24=24VDC, R110=110VAC, R220=220VAC  
**Note:** Other spools available on request.  
**Note:** LED DIN plugs and Standard Bolt Kit included.



More info? Go to our website  
[www.hyteco.com.au](http://www.hyteco.com.au) to see  
 our complete range of  
 Standard Products.

**Hyteco (Aust) Pty Ltd**  
 59 Kremzow Rd Brendale Qld 4500  
 phone: 07 3881 3312 fax: 07 3881 3314  
 email: [sales@hyteco.com.au](mailto:sales@hyteco.com.au) web: [www.hyteco.com.au](http://www.hyteco.com.au)