

BM2 ORBITAL GEROLER MOTORS

The BM2 Series motor is a spool valve geroler motor that offers the ideal balance of performance and price by delivering high comparable power output at a far lower cost.

Features:

Geroler (Roller-Star technology) design for:

- Lower friction
- Higher mechanical efficiency
- Higher start-up torque
- Smooth low speed operation
- Less wear on rollers and longer life

High pressure shaft seal for:

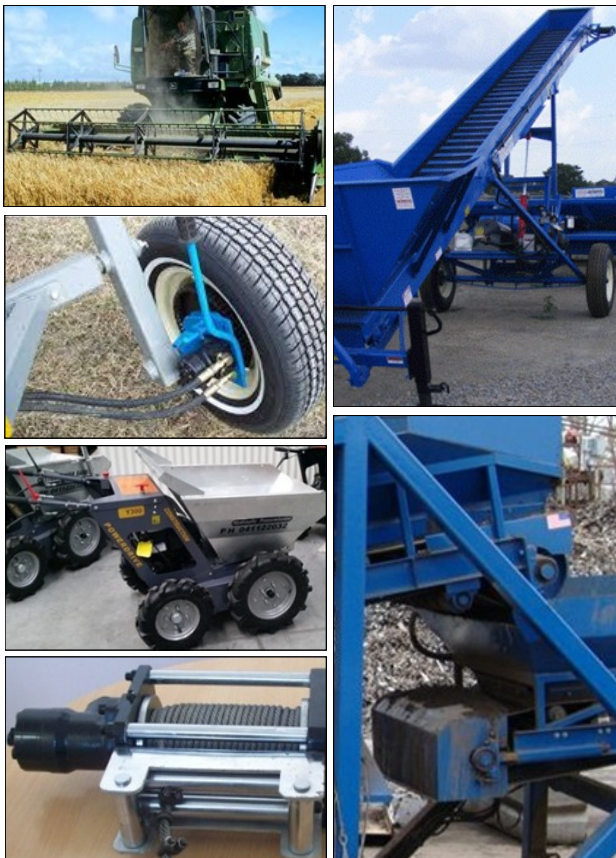
- Better back-pressure applications
- No drain line required in some applications

Optimised grooved spool valve for:

- Closer clearance geometry and lower leakage
- Smooth quiet running

Shaft double roller bearings for:

- Better radial load capability
- Lower spool leakage
- Longer motor life



APPLICATIONS

Road Sweepers	Grain Augers
Seeders	Harvesters
Food Processing	Loaders
Car Wash Equipment	Cranes
Turf Equipment	Fork Lifts
Marine Equipment	Chippers



More info? Go to our website
www.hyteco.com.au to see
 our complete range of
 products.

BM2 Motor Performance

BM2 - Disp. Code		A	B	C	D	E	F	G	H	I	J	K
Displacement (mL/Rev)		50	63	80	100	125	160	200	250	315	400	500
Flow (LPM)	Cont.	40	40	60	60	60	60	60	60	60	60	60
	Int.	50	50	75	75	75	75	75	75	75	75	75
Speed (RPM)	Cont.	755	630	750	600	475	375	300	240	190	160	110
	Int.	970	790	940	750	600	470	375	300	240	200	128
Pressure (Bar)	Cont.	140	140	175	175	175	165	130	110	85	85	80
	Int.	175	175	200	200	200	200	175	140	115	115	90
Torque (Nm)	Cont.	100	124	190	240	292	363	358	352	360	420	464
	Int.	126	156	220	280	340	430	448	470	470	548	580

Notes on Performance Data above:

- Intermittent operation: the permissible values may occur for max. (10%) 6 seconds of every minute.
- Simultaneous intermittent speed and pressure is not recommended.
- Optimum operating situation should be at the 1/3 ~ 2/3 of the continuous operating situation.
- Recommended filtration is per ISO cleanliness code 20/16. A nominal filtration of 25 micron or better.

BM2 Motor Configuration Options

Port Alignment Options

- S-staggered port with l'face (*)
- Parallel aligned ports
- Inline aligned ports

Port Options

- 2-1/2"BSPP (*)
- 2-7/8"UNO
- 2-M22x1.5
- 2-1/2"NPTF

Shaft Options

- 1" St keyed (*)
- 25mm St keyed
- 1" 6T B Splined
- 7/8"13T Splined

Mtg Flange Options

- 2 Bolt SAE A 3/4" Spigot (*)
- 4 Bolt 3/4" Sq. 1 3/4" Spigot
- 4 Bolt 90 Sq. 80 Spigot

BM2 Motor Configuration Codes

BM2	Style	Disp. (ml/r)		Mtg Flange		Shaft		Ports		Interface Thread		Drain		Options	
S	Staggered Ports	A	50	A	2 Bolt SAE A	B	1" St key	A	2 x G1/2	B	M10	C	G1/4	B	Front bearing
	Std - Other styles avail.	B	63	Std - Other flanges avail.		K	25mm St key	Std - Other ports avail.		Std - Other threads avail.		Std - Other drains avail.		Std - Other options avail.	
		C	80			C	1"x 6T B Spl								
		D	100			D	7/8" 13T Spl								
		E	125			Std - Other shafts avail.									
		F	160												
		G	200												
		H	250												
		I	315												
		J	400												
		K	500												



Sample Motor Code: **BM2 S D A B A B C B**

Std S-Port Interface, 100 ml/rev, 2 Bolt SAE A flange, 1" St Shaft, 1/2" BSPP Ports, 1/4" BSPP Drain, Front Bearing