

BM5 ORBITAL GEROLER MOTORS

The BM5 Series motor is a disc valve geroler motor that offers the ideal balance of performance and price by delivering high comparable power output at a far lower cost.

Features:

Geroler (Roller-Star technology) design for:

- Lower friction
- Higher mechanical efficiency
- Higher start-up torque
- Smooth low speed operation
- Less wear on rollers and longer life

High pressure shaft seal for:

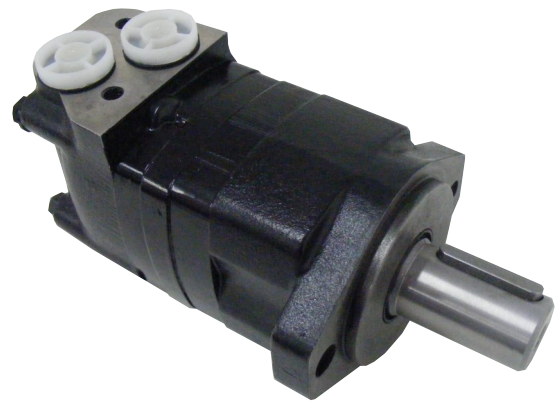
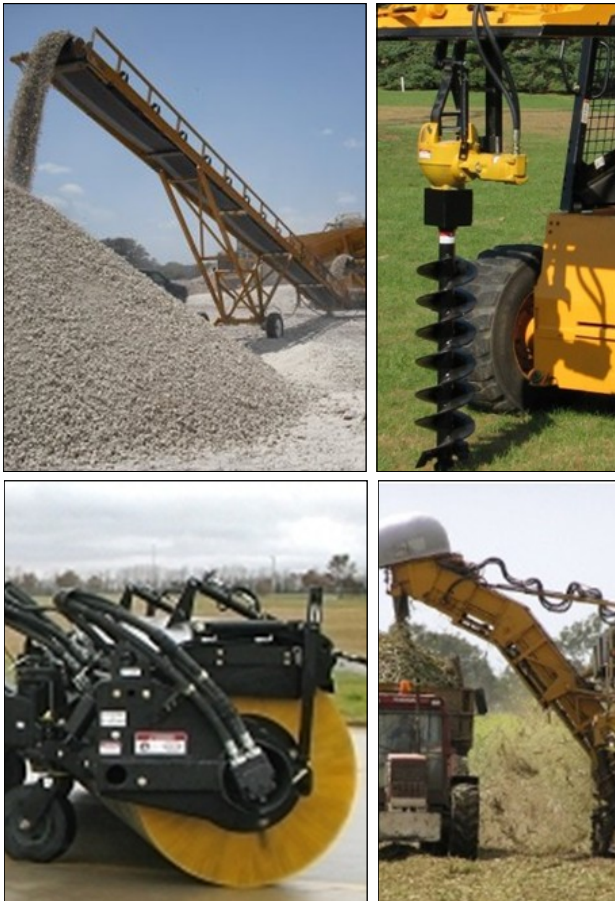
- Better back-pressure applications
- No drain line required in some applications

Disc valve technology for:

- Better flow distribution & timing at all speeds
- Low leakage & higher volumetric efficiency
- Better wear compensation for longer life

Dual high efficient tapered roller bearings for:

- Excellent low speed & high speed operation
- High side load capabilities
- Longer motor life



APPLICATIONS

Sweepers	Cranes
Grain Seeders	Boom Drives
Marine Equipment	Saw Mills
Concrete Equipment	Fertiliser Spreaders
Combine Harvesters	Wheel Drives
Loaders	Conveyors



More info? Go to our website
www.hyteco.com.au to see
 our complete range of
 products.

BM5 Motor Performance

BM5 - Disp. Code		A	B	C	D	E	I	F	G	H
Displacement (mL/Rev)		80	100	125	160	200	250	305	400	500
Flow (LPM)	Cont.	75	75	75	75	75	75	75	75	75
	Int.	85	95	95	115	115	115	115	130	130
Speed (RPM)	Cont.	850	675	552	430	345	276	226	180	144
	Int.	956	855	700	660	529	423	347	308	246
Pressure (Bar)	Cont.	175	175	175	175	175	175	150	150	120
	Int.	280	280	280	250	250	250	210	175	150
Torque (Nm)	Cont.	178	223	278	356	445	557	580	715	720
	Int.	285	356	445	519	636	725	763	840	860

Notes on Performance Data above:

- Intermittent operation: the permissible values may occur for max. (10%) 6 seconds of every minute.
- Simultaneous intermittent speed and pressure is not recommended.
- Optimum operating situation should be at the 1/3 ~ 2/3 of the continuous operating situation.
- Recommended filtration is per ISO cleanliness code 20/16. A nominal filtration of 25 micron or better.

BM5 Motor Configuration Options

Style Options

- Standard motor (*)
- Wheel motor

Port Options

- 2-1/2" BSPP (*)
- 2-7/8" UNO
- 2-1 1/16" UNO
- 2-M22x1.5

Shaft Options

- 1" St keyed (*)
- 32mm St keyed
- 1" 6T B Splined
- 1 1/4" 14T Splined

Mtg Flange Options

- 2 Bolt SAE A 3/4" Spigot (*)
- 4 Bolt 3/4" Sq. 1 3/4" Spigot
- 4 Bolt 90 Sq. 80 Spigot

BM5 Motor Configuration Codes

BM5	Style	Disp. (ml/r)	Mtg Flange	Shaft	Port Cover	Ports	Interface Thread	Drain	
A	Standard Motor	A 80	A 2 Bolt SAE A	A 32mm St key	B Interface Mounting	B 2 x G1/2	B M10	C G 1/4	
	Std - Other styles avail.	B 100	Std - Other flanges avail.	B 1 1/4" St key	Std - Other covers avail.	Std - Other ports avail.	Std - Other threads avail.	Std - Other drains avail.	
		C 125		C 1" x 6T B Spline					
		D 160		D 1 1/4" 14T Spline					
		E 200		Std - Other shafts avail.					
		I 250							
		F 305							
		G 400							
		H 500							



Sample Motor Code: **BM5 A C A A B B B C**

Standard motor, 125ml/rev, 2 Bolt SAE A flange, 32mm St Shaft, Port Interface, 1/2" BSPP Ports, 1/4" BSPP Drain

Hyteco (Aust) Pty Ltd

59 Kremzow Rd Brendale Qld 4500

phone: 07 3881 3312 fax: 07 3881 3314

email: sales@hyteco.com.au web: www.hyteco.com.au