



# EARTHMOVING CRANE VALVES - HOSE BURST

*To reduce the risk of a boom or dipper arm collapse on earthmoving equipment with a rated capacity greater than one tonne, hose burst protection valves should be fitted on critical hydraulic cylinders.*

*The Hyteco Earthmoving Crane Valves (HECV) serve this purpose and are made to suit a range of configurations along with a variety of features and options to suit most applications.*

## Installation

Simple, straightforward installations can be undertaken on a variety of excavators, backhoes and loaders being used as a crane lifting application. It is highly recommended that all HECV installations be carried out by suitably qualified mobile fluid power technicians.

## Safety compliant

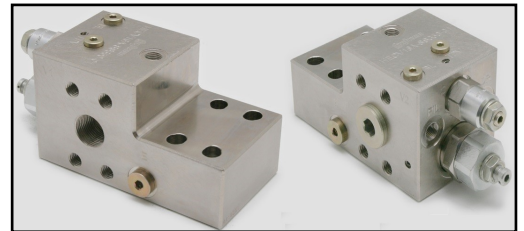
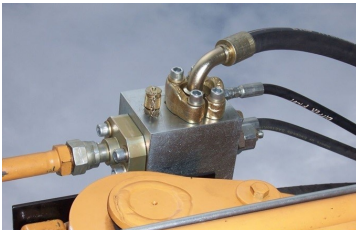
All of the HECV range provide burst protection when fitted to boom and dipper arm cylinders. The importance of these types of valves can be referenced to AS1418.8 Cranes, Hoists and—Special Purpose Appliances (also see ISO8643). However, all HECV valves need to be installed and set correctly in order to comply with these safety standards.

## Multiple styles and configurations

Models are available in various ported, size and mounting configurations, allowing direct cylinder mounting or the option of being piped inline.

## Duty and Reliability

All HECV's have been designed for high reliability and are fully serviceable. As with all our Standard Products, these manifolds provide the industry benchmark through excellence in design, innovation and product quality.



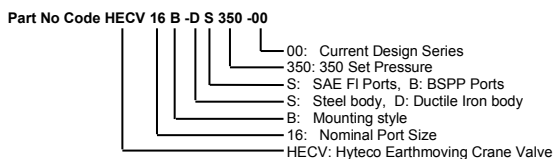
*Example of the Port Mounted Style*



*Example of the Inline Mounted Style*

*T&B : Typical Port Mounted*

*T&B : Typical Inline Mounted*



## TECHNICAL SPECIFICATIONS

Max. Input Press.	up to 400 bar
Rated Flow	up to 550 l/min
Main Ports	BSPP up to Dual SAE C61 or C62
Pilot Port	1/4" BSPP
Body	Electroless Nickel Plated Steel

## SIZE AND MOUNTING OPTIONS AVAILABLE

Porting Sizes	08—1/2", 12—3/4", 16—1", 20—1 1/4" C61 C62
Mounting	Inline Piped mounted or Direct Port mounted



More info? Go to our website  
[www.hyteco.com.au](http://www.hyteco.com.au) to see  
 our complete range of  
 Standard Products.

**Hyteco (Aust) Pty Ltd**  
 59 Kremzow Rd Brendale Qld 4500  
 phone: 07 3881 3312 fax: 07 3881 3314  
 email: [sales@hyteco.com.au](mailto:sales@hyteco.com.au) web: [www.hyteco.com.au](http://www.hyteco.com.au)