

Our range of Cetop Multi-station Manifolds are the flagship of the full range of quality Hyteco Standard Products. We have endeavoured to provide innovative options and features in our Cetop Multi-station Manifolds that allow adaptability and flexibility in application, as well as all the standard industry functions.

Three Station Cetop3 with Relief and Two Station Cetop5



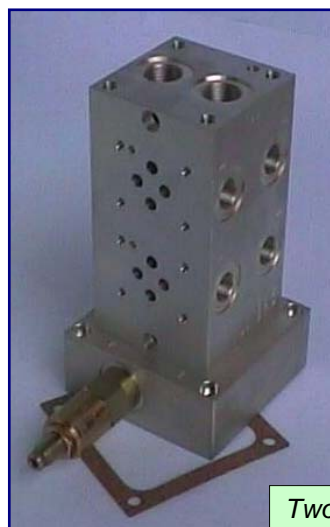
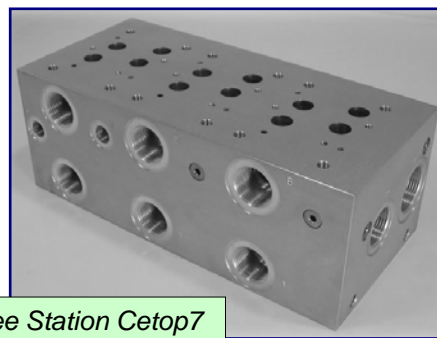
Product Range

- Cetop3 (NG6) (stock 1 to 8 Stn)
- Cetop5 (NG10) (stock 1 to 8 Stn)
- Cetop7 (NG16) (stock 1 to 3 Stn)
- Parallel flow path on all sizes
- Series flow path on Cetop3 and Cetop5
- Load sense on A and B ports on all sizes
- Available in Aluminium and Steel

Standard Features

- Wide choice of mounting options
- Relief valve or standard cavity option in all sizes
- Load sense models have the checks built in
- Identical layouts for Parallel, Series, Relief and LS models

Three Station Cetop7



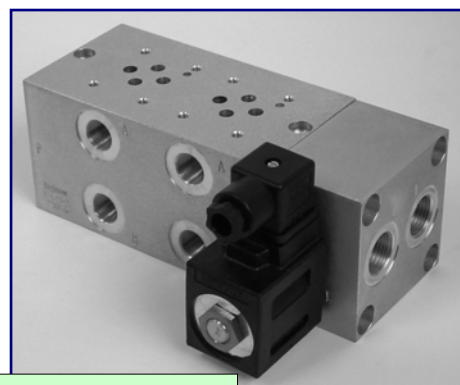
Two Station Cetop3 with a Tanktop Adaptor and gasket

Adaptors and End Modules

Either ends of Cetop3 and Cetop5 can accept a variety of bolt-on Tanktop and End Modules.

This allows you to:-

- Mix and match to suit requirements
- Extend the standard options
- Simplify installations
- Reduce hose connections



Two Station Cetop3 with a Sol. Unloading End Module