

- Need to hose up a hydraulic cylinder in a confined or hard to reach location?
- Want to incorporate safety load-holding capability right at the cylinder?

Hyteco can design and manufacture cylinder endcaps for any application, any size, any shape, any feature, simple or complex. The possibilities are endless when it comes to custom designed cylinder endcaps.

As with all our Custom Products, these Cylinder Endcaps provide the industry with the best in design innovation and product quality.

## Application Options and Features

Cylinder Endcaps allow design and application flexibility such as:-

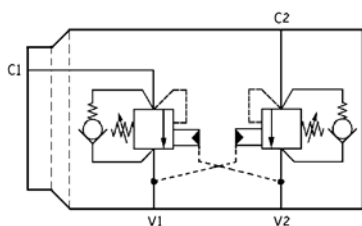
- Built-in and self contained systems
- Incorporate screw-in, slip-in and bolt-on valves
- Designs to suit space and structural limitations
- Special contours, rebates and clearance cut-outs
- Cylinder styles, NFPA, Industrial, Roundline, ASEA
- Bore diameters 30mm - 350mm
- Safety and load-holding applications



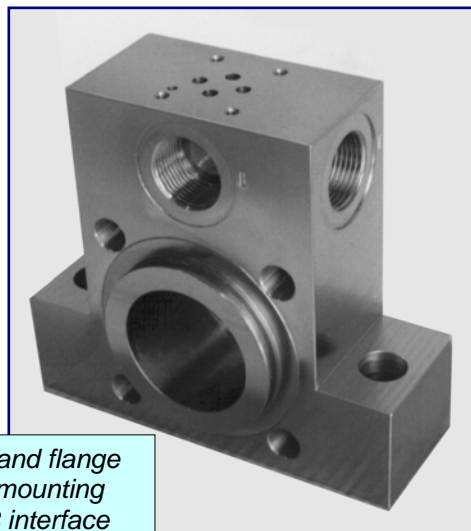
*Male clevis mounting with a single counterbalance*

## Overall Benefits

- Add features, benefits and value to cylinder manufacture
- Allow better design and application flexibility
- Compact and space savings
- Simplify OEM installation procedures
- 350 Bar pressure rating



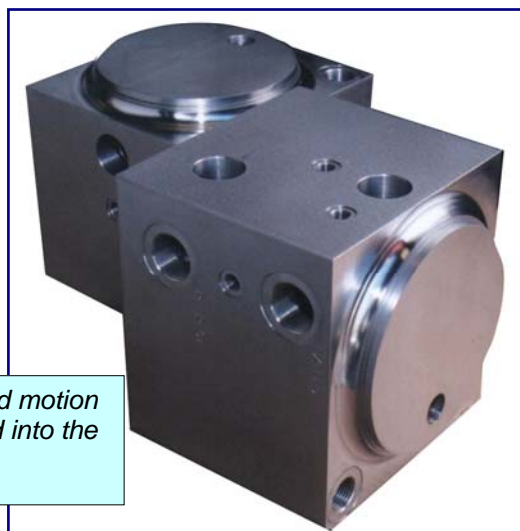
*Typical dual counterbalance circuit*



*Front rod gland flange and tie-rod mounting with Cetop3 interface*

## Standard Design Option

- Barrel attachment: weld-on, tie rod or screw-on
- Position: rear endcap, front rod gland or mid barrel
- Layout: choice of shapes, sizes and complexity
- Cylinder mounting: M or F/M clevis, trunnion or flange



*Full proportional and motion control incorporated into the cylinder endcap*

For more information on the complete range of Hyteco manifolds, call the **Hyteco Sales Line**

Tel: 07 38813312 Fax: 07 38813314  
[sales@hyteco.com.au](mailto:sales@hyteco.com.au) [www.hyteco.com.au](http://www.hyteco.com.au)