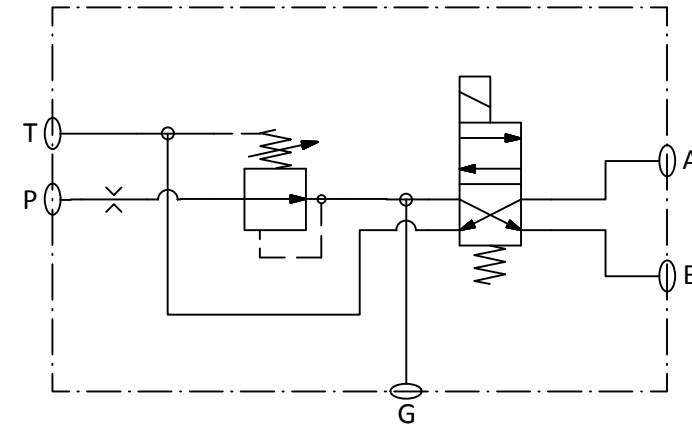
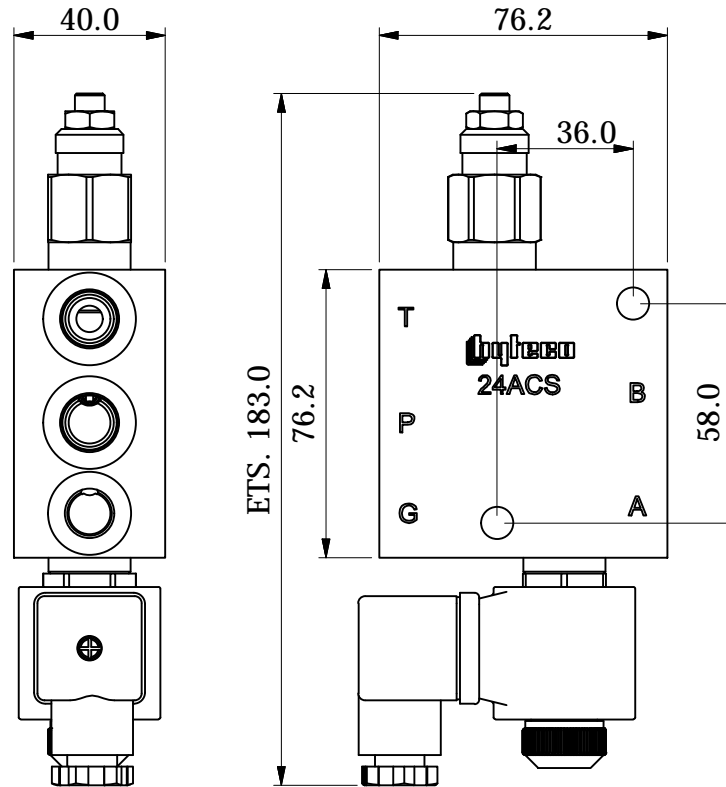
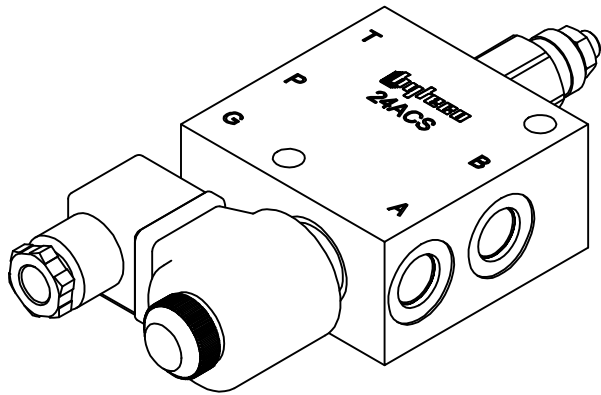


# QUICK HITCH VALVE

59 Kremzow Rd, Brendale, QLD, Australia 4500  
 Tel: +61 7 3881 3312, Fax: +61 7 3881 3314  
 Email: sales@hyteco.com.au  
 Web: www.hyteco.com.au

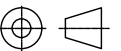
Max pressure: 315 bar, Reducing 35-90 bar  
 Capacity: 30 L/min.  
 Ports: P,T,A,B : #6 SAE (9/16" UNO)  
 G : G 1/4"-19 BSPP  
 Mounting: 8.5mm THROUGH



Ordering Code	Approx. Weight (kg)
ETD24ACS-10A	2.161 kg

Voltage Series

Voltage: A: 12 VDC  
 B: 24 VDC  
 C: 120 VAC  
 D: 240 VAC



DWG. 6566 (A)  
9/03/2016