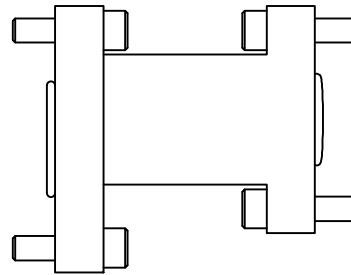
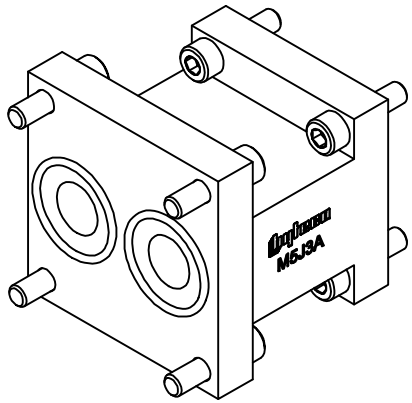


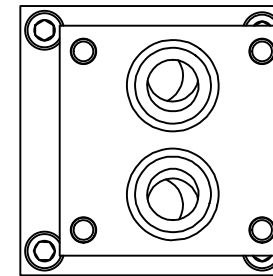
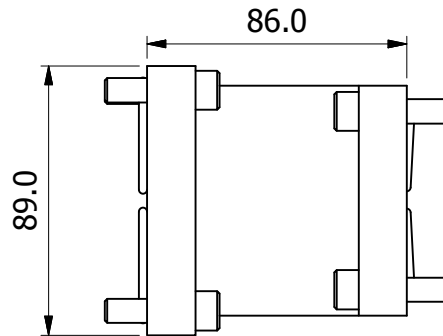
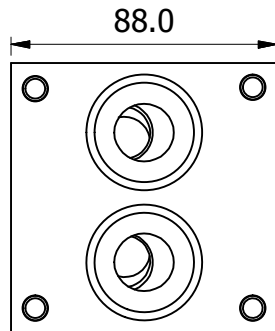
JOINER FOR MULTI STATION CETOP 5 TO CETOP 3

59 Kremzow Rd, Brendale, QLD, Australia 4500
 Tel: +61 7 3881 3312, Fax: +61 7 3881 3314
 Email: sales@hyteco.com.au
 Web: www.hyteco.com.au



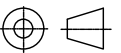
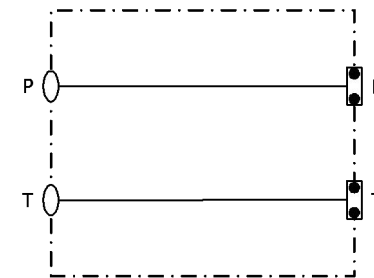
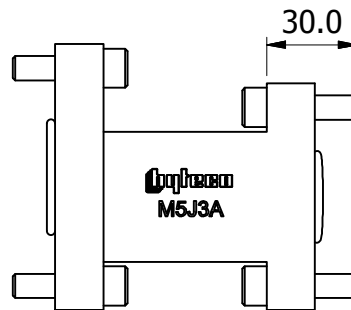
Galleries: Ø17mm THROUGH
 Mounting: 8 x SHCS M8x1.25x30mm
 ORings: 2 x BS125, 2 x BS120
 (TO SUIT MULTI-STATION
 SUBPLATES)

Recommended Aluminium 210 Bar
 Pressure: Steel / DI 350 Bar



Ordering Code	Approx. Weight (kg)
M5J3A	1.085 kg

Material: A: ALUMINIUM
 D: DUCT. IRON
 S: STEEL



DWG. 6446 (A)
 18/09/2015