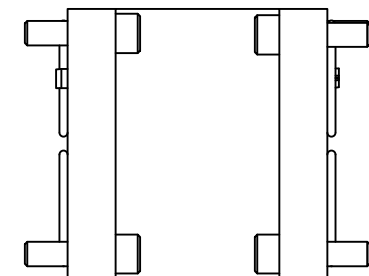
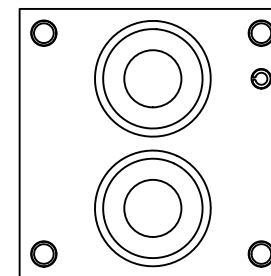
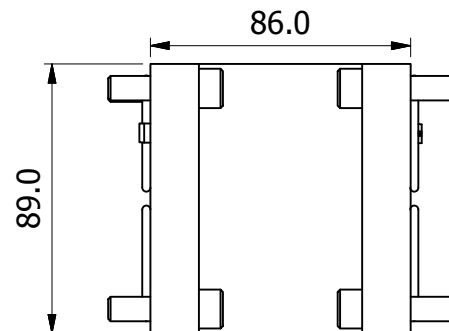
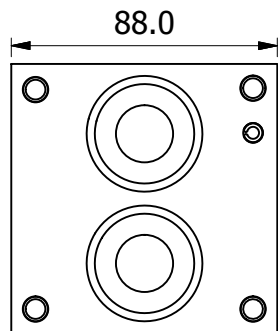


Galleries: Ø19mm THROUGH
 Mounting: 8 x SHCS M8x1.25x30mm
 ORings: 4 x BS125
 Spring Pins: 2 x 1/4" X 1/2" SPRING PIN
 (TO SUIT MULTI-STATION
 SUBPLATES)

Recommended Aluminium 210 Bar
 Pressure: Steel / DI 350 Bar



Ordering Code	Approx. Weight (kg)
M5J5A	1.413 kg

Material: A: ALUMINIUM
 D: DUCT. IRON
 S: STEEL

